



New Product Launch

SS3 series Power entry modules with line filter with waterproof appliance inlet of IP54

■ Feature

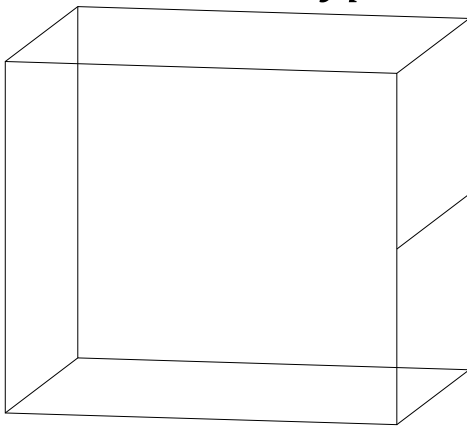
Compact version of EMI/RFI filter with an IEC inlet socket and 2-pole fuseholder.
 Screw mount from front or rear.
 Available in both general equipment & low leakage current medical environments.
 Sealing power input is rated IP54 for protection against liquids or mist.
 from front side IP 65 acc. to IEC 60529.
 from rear-side IP 65 acc. to IEC 60529.
 Good attenuation performance.
 Combine different EMI solution for your application.
 Optional insulating PVC cover.
 Fully safety approvals



■ Customer Applications

Medical infusion pump.

3D Prototype



click to rotate

■ Technical data and measuring conditions

Rated Current: 1-10A @ 50°C Rated Voltage: 115/250VAC
 Operating Frequency: 50/60Hz Operating temp. : -25°~ + 85° C

Hipot Rating (for 1 min.)
 Line to Line: 1450 VDC
 Line to Ground: 2250 VAC

Leakage Current (each line to ground)
 @ 115VAC 60Hz: 2uA~0.3mA
 @ 250VAC 50Hz: 5uA~0.6mA

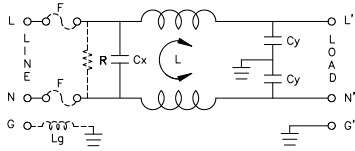
Climatic category: HPF 25/085/21 Case: metal
 Safety requirement according to IEC/UL 60529 and IEC/UL 60601-1



New Product Launch

SS3 series Power entry modules with line filter with waterproof appliance inlet of IP54

Electrical schematic



Filter ordering table

Item	Filter part no.	Rated current (Amps)	Leakage current (mA)		Inductance (mHx2)	Capacitance		Resistance (KΩ)	Fuse holder (Q'ty)
			115VAC	250VAC		Cx(μF)	Cy(pF)		
1	01SS3-1SR-Q	1	0.25	0.45	6.5	0.1	2200	1000	1
2	03SS3-1SR-Q	3	0.25	0.45	2.5	0.1	2200	1000	1
3	06SS3-2SR-Q	6	0.25	0.45	0.8	0.1	2200	1000	2
4	10SS3-2SR-Q	10	0.25	0.45	0.2	0.1	2200	1000	2
5	01SS3-1BR-Q	1	0.3	0.6	3.7	0.1	3300	1000	1
6	03SS3-1BR-Q	3	0.3	0.6	1.8	0.1	3300	1000	1
7	06SS3-2BR-Q	6	0.3	0.6	0.8	0.1	3300	1000	2
8	10SS3-2BR-Q	10	0.3	0.6	0.3	0.1	3300	1000	2
9	01SS3-1HR-Q	1	0.25	0.45	6.5	0.22	2200	1000	1
10	03SS3-1HR-Q	3	0.25	0.45	2.5	0.22	2200	1000	1
11	06SS3-2HR-Q	6	0.25	0.45	0.8	0.22	2200	1000	2
12	10SS3-2HR-Q	10	0.25	0.45	0.3	0.22	2200	1000	2
13	01SS3-1IR-Q	1	0.3	0.6	6.5	0.22	3300	1000	1
14	03SS3-1IR-Q	3	0.3	0.6	2.5	0.22	3300	1000	1
15	06SS3-2IR-Q	6	0.3	0.6	0.8	0.22	3300	1000	2
16	10SS3-2IR-Q	10	0.3	0.6	0.3	0.22	3300	1000	2

Mechanical dimension (Unit: mm / inch)

