

Termination available:

Inside Screw Terminal  
Enclosure Screws

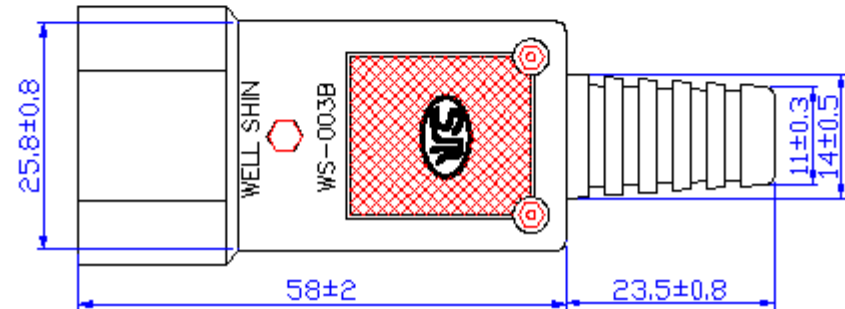
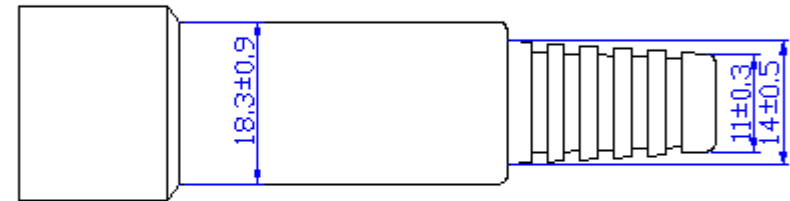
Specifications:

Contact Material: Nickel Plated Brass  
Body Material: Nylon 6.6 94 V0  
Manufacturers Specification: EN60320  
Specification: UL 817 - 498

International Amperage: 10 Amp  
Voltage: 250 Volt

UL / CSA Amperage: 15 Amp.  
Voltage: 125 Volt:

All Dimensions are in mm



675 S. Lively Blvd.  
Elk Grove Village  
Illinois 60007

Agency Approvals



CUSTOMER	000000000000
PARTNO.	000000000000

DATE: 08.28.2003	Drawn By: J.Balck	GENERAL SPECIFICATION	PAGE: 1 OF 1	
CHANGE ISSUE:			DWG.NO. WS - 003 - B	REV. 0
APPROVED		Power Plug Hooded Male IEC 320 - C14 For Mechanical Assembly		