



EMI Filter with IEC 320/C20 Power Inlet

U case



Ordering information

1 **SSI** 2 - **U** 3 4 5 - 6

1 Current Rating - 20

20 ; 20A for UL approved, 16A for Semko, VDE approved

2 Schematic type

Standard (empty), B, D, E, F, H, J, K, M

3 Components table

Refer components table

4 Ground choke (options)

G ; L_g=100uH
G1 ; L_g=6uH
G2 ; L_g=180uH
G3 ; L_g=400uH

5 Bleeder resistor (options)

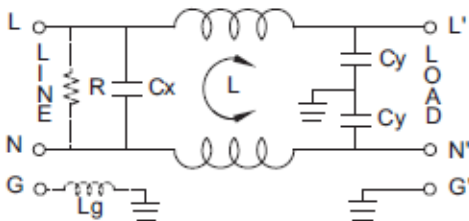
R ; R=1M ohm; 1/4W min.

6 Output terminal type

Q ; fast-on(6.3mm)
S ; solder(4mm)
W ; with wire

Schematic type

Standard



R:options L_g:options

* please call for other's alternates

Components table

Code	Cx(μF)	Cy(pF)	Inductance LmH x 2 in Amps		Max. Leakage(mA)		Rating Volts		Hi-pot test Volts	
			16/20A		115VAC	250VAC	VAC	Hz	LN-G	L-N
Empty	0.1	2200	0.5		0.2	0.4	115/250	50/60	2250VDC	1450VDC
B	0.1	3300	0.5		0.25	0.5	115/250	50/60	2250VDC	1450VDC

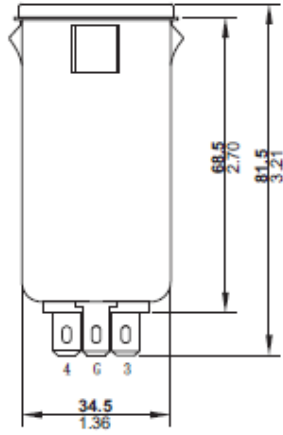
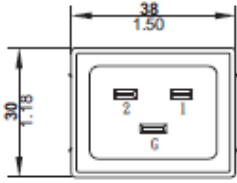
* please call for other's combinations

Insertion loss table

(In 50ohm system according IEC/CISPR No.17)

Code	Rating	Comm. Mode(L-G)in MHz						Diff. Mode(L-L)in MHz					
		.15	.5	1	5	10	30	.15	.5	1	5	10	30
Empty	16/20A	17	22	26	43	51	43	8	18	24	45	43	35
B	16/20A	17	23	28	47	57	45	8	18	23	51	54	34

■ Mechanical Dimension unit: $\frac{\text{mm}}{\text{inch}}$



SUGGESTED PANEL CUTOUT
(MOUNTING FROM FRONT)
THICKNESS OF PANEL IS FROM
1.0mm To 1.6MM

